



Chatham Education Foundation

CONTENTS

EIN: 22-3285022
Report Generated on: 09/07/2022

Executive Summary	2
Programs & Results	4
Financial Review	7
Operations & Leadership	9

APPENDIX

Key Documents	18
Charity Check Report	19

Chatham Education Foundation

📍 Chatham, NJ
🌐 www.chathamedfoundation.org
📞 917-817-5068

🔗 [View GuideStar Profile](#)



Silver
Transparency
2022

Candid.

MISSION

Support educational excellence in the School District of the Chathams through parent and community donations

EIN

22-3285022

RULING YEAR

1997

IRS SUBSECTION

501(c)(3) Public Charity

FOUNDING YEAR

1994

MAIN ADDRESS

PO Box 81
Chatham, NJ
07928

AFFILIATION TYPE

Independent Organization

CONTACT

Alan Routh, Vice President
alanrouth@mac.com

PRESIDENT

Laura Bojanowski

BOARD CHAIR

Sally Allen

SUBJECT AREA

Elementary and secondary
education

NTEE Code

Single Organization Support
(B11)

PROGRAMS

1. Support educational excellence in the School District of the Chathams, NJ

Population(s) served: Young adults, Adolescents, Children, Preteens

POPULATIONS SERVED

- 1. Children
- 2. Preteens
- 3. Adolescents
- 4. Adolescent parents

COMPLIANCE

- ✓ IRS Pub 78 Verified as of August 2022
- ✓ IRS BMF 509(a) (1) as of August 08, 2022
- ✓ A-133 Audit Required/Performed?
- ✓ Conflict of Interest Policy
- ✓ Written whistleblower policy

Section 509(a)(1) organization as referred to in Section 170(b)(1)(A)(vi)

TRANSPARENCY MEASURES

- ✓ Board Practices Reported?
- ✗ Diversity Data Reported?
- 25 Number of Independent Board Members

Programs & Results

PROGRAMS

Source: Self-Reported by Organization,
September 2022

Support educational excellence in the School District of the Chathams, NJ

Population(s) Served: n/a

Chatham Education Foundation supports initiatives that would not otherwise be funded through the traditional school district budget.

Grant-making is structured around four principal goals:

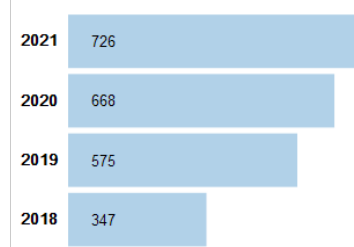
1. Innovative Learning Spaces
2. Supporting Educator Growth
3. Fostering Student Well-being
4. Supporting Student Learning

Within those broad outlines, Foundation grants support the arts, classrooms of the future, literacy, professional development, social studies, social-emotional support, the future-focused education speaker series, and initiatives in Science, Technology, Engineering, and Math (STEM).

RESULTS

Average number of dollars received per donor

TOTALS BY YEAR



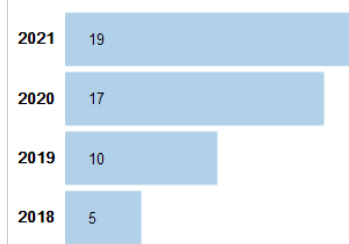
Population(s) Served: No target populations selected

Related program: Support educational excellence in the School District of the Chathams, NJ

Notes: To learn how to give and for a list of our generous donors, please see www.chathameducationfoundation.org.

Number of endowments

TOTALS BY YEAR



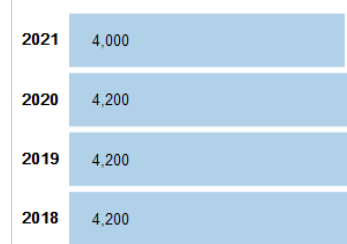
Population(s) Served: No target populations selected

Related program: Support educational excellence in the School District of the Chathams, NJ

Notes: Our growing endowment has reached over \$1.3 million. For a description of the endowment, how to give, and a list of endowment donors, please see www.chathameducationfoundation.org.

Number of children who have the ability to understand and comprehend communication

TOTALS BY YEAR

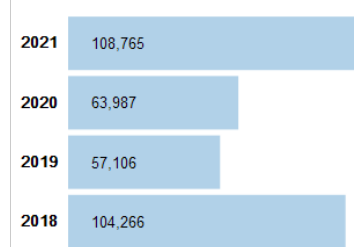


Population(s) Served: No target populations selected

Related program:

Total dollar amount of grants awarded

TOTALS BY YEAR



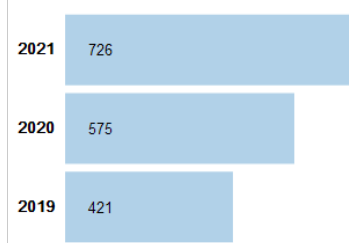
Population(s) Served: No target populations selected

Related program: Support educational excellence in the School District of the Chathams, NJ

Notes: For details on grants awarded, please see www.chathameducationfoundation.org. Pre COVID, grants averaged \$104,000 per year. Thus far in the 2021-22 school year, \$55,723 in grants have been awarded.

Number of overall donors

TOTALS BY YEAR



Population(s) Served: No target populations selected

Related program:

CHARTING IMPACT

What is the organization aiming to accomplish?

The Chatham Education Foundation's vision is to be the leading partner for the School District of the Chathams for collaborating on innovative ideas to enrich education, support future-focused initiatives, and establish a sustainable source of funding through an endowment.

What are the organization's key strategies for making this happen?

In addition to annual grant funding of \$100,000, Chatham Education Foundation established an endowment to address increasing strains on the School District of the Chathams. A Permanent Endowment, by producing a reliable stream of income, will bring increased stability and longevity to grant funding, as well as the ability to increase the absolute level of grants. A Term Endowment will help the school district deal with inevitable budget shocks resulting from unpredictable New Jersey State funding levels. We hope that Chatham Education Foundation donors will contribute to the endowment and continue their history of strong philanthropic support for our schools.

What are the organization's capabilities for doing this?

The Foundation's Board of Trustees consists of volunteers from all corners of the community and operates independently of the Board of Education, parent-teacher organizations, and booster groups.

What have and haven't they accomplished so far?

Net operating income for fiscal year 2020-21 rose 60% from the prior fiscal year. Net assets at the end of the fiscal year were a record \$1.4M, up 60% from the prior fiscal year. Assets include an endowment with \$1.3M market value. As a result of new endowment agreements and strong operating financials, the endowment has been built while maintaining significant levels of grant-giving to the school district.

For school year 2020-21 the Foundation funded 6 grants to teachers and administrators for a total of \$64k, up 12% from the prior fiscal year.

Grants covered a wide array of curricular areas and projects.

All students and educators in our school district are positively impacted by donations made to Chatham Education Foundation. Our generous donors proudly help us Reach Higher!

Financials

FISCAL YEAR START: 07/01

FISCAL YEAR END: 06/30

✓ Financials audited by an independent accountant

FINANCIALS QUICK VIEW

Total revenue, gains, and other support per audited financial statements **\$323,176**

Total expenses and losses per audited financial statements **\$96,613**

Financial Trends Analysis

Business Model Indicators

Created in Partnership with



Profitability	2017	2018	2019	2020
Unrestricted surplus (deficit) before depreciation	\$70,027	\$171,810	\$90,575	\$47,581
As a % of expenses	63.9%	134.2%	68.3%	50.6%
Unrestricted surplus (deficit) after depreciation	\$70,027	\$171,810	\$90,575	\$47,581
As a % of expenses	63.9%	134.2%	68.3%	50.6%
Revenue Composition				
Total revenue (unrestricted & restricted)	\$179,577	\$221,266	\$326,609	\$287,105
Total revenue, % change over prior year	0.0%	23.2%	47.6%	-12.1%
Program services revenue	0.0%	0.0%	0.0%	0.0%
Membership dues	0.0%	0.0%	0.0%	0.0%
Investment income	1.6%	1.8%	2.4%	4.0%
Government grants	0.0%	0.0%	0.0%	0.0%
All other grants and contributions	77.5%	81.6%	83.6%	93.6%
Other revenue	20.9%	16.6%	14.0%	2.4%
Expense Composition				
Total expenses before depreciation	\$109,550	\$128,028	\$132,552	\$94,042
Total expenses, % change over prior year	0.0%	16.9%	3.5%	-29.1%
Personnel	0.0%	0.0%	0.0%	0.0%
Professional Fees	0.0%	0.0%	0.0%	10.4%
Occupancy	0.0%	0.0%	0.0%	0.0%
Interest	0.0%	0.0%	0.0%	0.0%
Pass-Through	81.9%	81.7%	78.7%	60.7%
All other expenses	18.1%	18.3%	21.3%	28.9%

Financial Trends Analysis, continued

Moving Toward Full Cost Coverage

Full Cost Components (estimated)	2017	2018	2019	2020
Total Expenses (after depreciation)	\$109,550	\$128,028	\$132,552	\$94,042
One Month of Savings	\$9,129	\$10,669	\$11,046	\$7,837
Debt Principal Repayment	\$0	\$0	\$0	\$0
Fixed Asset Additions	\$0	\$0	\$0	\$0
Total Full Costs (estimated)	\$118,679	\$138,697	\$143,598	\$101,879

Capital Structure Indicators

Liquidity

Months of cash	18.0	18.0	16.1	7.7
Months of cash and investments	29.8	35.0	51.6	109.9
Months of estimated liquid unrestricted net assets	29.9	35.1	42.1	73.8

Balance Sheet Composition

Cash	\$164,477	\$191,967	\$177,776	\$60,054
Investments	\$107,619	\$181,696	\$392,294	\$801,015
Receivables	\$0	\$0	\$0	\$3,700
Gross land, buildings, and equipment (LBE)	\$0	\$0	\$0	\$0
Accumulated depreciation (% of LBE)	0.0%	0.0%	0.0%	0.0%
Liabilities (as % of assets)	0.0%	0.0%	0.0%	0.1%
Unrestricted net assets	\$272,847	\$374,630	\$465,205	\$578,125
Temporarily restricted net assets	\$0	\$0	\$26,216	N/A
Permanently restricted net assets	\$0	\$0	\$78,649	N/A
Total restricted net assets	\$0	\$0	\$104,865	\$285,682
Total net assets	\$272,847	\$374,630	\$570,070	\$863,807

Key Data Checks

Material Data Errors	2017	2018	2019	2020
	No	No	No	No

Note: This issue is relevant to a small number of organizations: The nonprofit subject(s) of this report may have affiliates. The Form 990 data may not include information about any or all potential affiliates. If an organization does have affiliates and these affiliates have substantial financial activity, the financial data in this report may not present a comprehensive picture of the nonprofit's financial condition. Please consult the 990s of any potentially related affiliates for additional information.

[Formulas for key metrics](#)

['Key Revenue & Expense Data from Form 990'](#)

['Key Balance Sheet Data from Form 990'](#)

Operations

Source: Self-Reported by Organization, September 2022

PRESIDENT

Laura Bojanowski

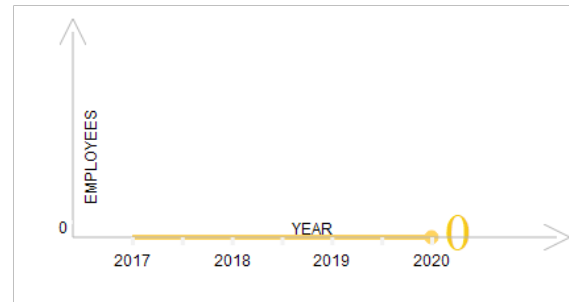
Laura joined the board of CEF in 2018 and has served in various roles including Vice President, Chair of Nominating & New Member Development, Secretary, and co-chair of the Evening of Recognition & Grant Showcase before becoming President in July 2022.

In addition to volunteering with CEF, Laura is a Sustaining member of the Junior League of Summit and served on the board of the Overlook Auxiliary. Laura is currently Associate Principal at Payer Sciences, a healthcare marketing agency of Publicis Health and has spent over 15 years in pharmaceutical marketing at Johnson & Johnson, Sanofi, and Eisai. Laura earned a doctorate of Pharmacy degree from Duquesne University and is a licensed NJ pharmacist.

Laura has lived in Chatham since 2009 with her husband David and daughter who attends Milton Avenue School where Laura leads a Girl Scout troop and previously served as PTO President.

NUMBER OF EMPLOYEES

Source: IRS Form 990



BOARD CHAIR

Sally Allen

OFFICERS, DIRECTORS, TRUSTEES, AND KEY EMPLOYEES

FISCAL YEAR 2020

Name	Title	Compensation	Other	Related
Sally Allen	President	\$0	\$0	\$0
Theresa Cooper	Treasurer	\$0	\$0	\$0
Alan Routh	Vice President Endowment	\$0	\$0	\$0
Cheryl Whitney	Secretary	\$0	\$0	\$0
Nona Leroux	Trustee	\$0	\$0	\$0
Jessica Lakin	Trustee	\$0	\$0	\$0
David Prael	Trustee	\$0	\$0	\$0
Christine Sterling	Trustee	\$0	\$0	\$0
Zahrah Khan	Trustee	\$0	\$0	\$0
Erik Metviner	Trustee	\$0	\$0	\$0
Amy Coates	Trustee	\$0	\$0	\$0
Colin Devlin	Trustee	\$0	\$0	\$0
Allison Eckles	Trustee	\$0	\$0	\$0
Ananya Holland	Trustee	\$0	\$0	\$0
Kanchana Leung	Trustee	\$0	\$0	\$0
Jen Rowland	Trustee	\$0	\$0	\$0
Diane Rooney	VP Events	\$0	\$0	\$0
Laura Bojanowski	Trustee	\$0	\$0	\$0
Ron Epstein	Trustee	\$0	\$0	\$0
Wendy Kuppenheimer	Trustee	\$0	\$0	\$0
Rosalinda Rubio-Williams	Trustee	\$0	\$0	\$0
Sara Zuckerman	Trustee	\$0	\$0	\$0
Emily Wurdemann	Trustee	\$0	\$0	\$0
Jennifer McNally	Trustee	\$0	\$0	\$0
Amanda Feeman	Trustee	\$0	\$0	\$0

OFFICERS, DIRECTORS, TRUSTEES, AND KEY EMPLOYEES

FISCAL YEAR 2019

Name	Title	Compensation	Other	Related
Amanda Feeman	President	\$0	\$0	\$0
Diane Rooney	Vice President	\$0	\$0	\$0
Alan Routh	Vice President and Treasurer	\$0	\$0	\$0
Cheryl Whitney	Secretary	\$0	\$0	\$0
Sally Allen	Trustee	\$0	\$0	\$0
Laura Bojanowski	Trustee	\$0	\$0	\$0
Amy Coates	Trustee	\$0	\$0	\$0
Allison Eckles	Trustee	\$0	\$0	\$0
Ron Epstein	Trustee	\$0	\$0	\$0
Ananya Holland	Trustee	\$0	\$0	\$0
Zahrah Khan	Trustee	\$0	\$0	\$0
Wendy Kuppenheimer	Trustee	\$0	\$0	\$0
Jessica Lakin	Trustee	\$0	\$0	\$0
Nona Leroux	Trustee	\$0	\$0	\$0
Jennifer McNally	Trustee	\$0	\$0	\$0
Jennifer McNally	Trustee	\$0	\$0	\$0
Erik Metvler	Trustee	\$0	\$0	\$0
Jennifer Rowland	Trustee	\$0	\$0	\$0
Rosalinda Rublo Williams	Trustee	\$0	\$0	\$0
Christine Sterling	Trustee	\$0	\$0	\$0
Sara Zuckerman	Trustee	\$0	\$0	\$0
Julie Lee	Trustee	\$0	\$0	\$0
Stephanie Yarcheski	Trustee	\$0	\$0	\$0
Troy Hamilton	Trustee	\$0	\$0	\$0
Barbara Delaney	Trustee	\$0	\$0	\$0

OFFICERS, DIRECTORS, TRUSTEES, AND KEY EMPLOYEES

FISCAL YEAR 2018

Name	Title	Compensation	Other	Related
Amanda Feeman	President	\$0	\$0	\$0
Diane Rooney	Vice President	\$0	\$0	\$0
Alan Routh	Vice President and Treasurer	\$0	\$0	\$0
Cheryl Whitney	Secretary	\$0	\$0	\$0
Stacey Ewald	Past President	\$0	\$0	\$0
Sally Allen	Trustee	\$0	\$0	\$0
Amy Coates	Trustee	\$0	\$0	\$0
Mary Coyle	Trustee	\$0	\$0	\$0
Barbara Delaney	Trustee	\$0	\$0	\$0
Ron Epstein	Trustee	\$0	\$0	\$0
Troy Hamilton	Trustee	\$0	\$0	\$0
Zahrah Khan	Trustee	\$0	\$0	\$0
Wendy Kuppenhelmer	Trustee	\$0	\$0	\$0
Jessica Lakin	Trustee	\$0	\$0	\$0
Julie Lee	Trustee	\$0	\$0	\$0
Nona Leroux	Trustee	\$0	\$0	\$0
Kanchana Leung	Trustee	\$0	\$0	\$0
Jennifer McNally	Trustee	\$0	\$0	\$0
Erik Metvler	Trustee	\$0	\$0	\$0
Kristen Panagakos	Trustee	\$0	\$0	\$0
Rosalinda Rubio Williams	Trustee	\$0	\$0	\$0
Christine Sterling	Trustee	\$0	\$0	\$0
Julie Suter	Trustee	\$0	\$0	\$0
Stephanie Yarcheski	Trustee	\$0	\$0	\$0
Melissa Cavallone	Trustee	\$0	\$0	\$0

OFFICERS, DIRECTORS, TRUSTEES, AND KEY EMPLOYEES

FISCAL YEAR 2017

Name	Title	Compensation	Other	Related
Amanda Feeman	President	\$0	\$0	\$0
Alan Routh	Vice President	\$0	\$0	\$0
Diane Rooney	Secretary	\$0	\$0	\$0
Jomil Guerrero	Treasurer	\$0	\$0	\$0
Stacey Ewald	N/A	\$0	\$0	\$0
Amy Coates	N/A	\$0	\$0	\$0
Mary Coyle	N/A	\$0	\$0	\$0
Mae Hacking	N/A	\$0	\$0	\$0
Zahrah Khan	N/A	\$0	\$0	\$0
Thad Kobylarz	N/A	\$0	\$0	\$0
Mariel Kolker	N/A	\$0	\$0	\$0
Jessica Lakin	N/A	\$0	\$0	\$0
Nona Laroux	N/A	\$0	\$0	\$0
Julie Lee	N/A	\$0	\$0	\$0
Laura Ali Nonnenmaker	N/A	\$0	\$0	\$0
Kristen Panagakos	N/A	\$0	\$0	\$0
Jennifer Smith	N/A	\$0	\$0	\$0
Julie Suter	N/A	\$0	\$0	\$0
Sonia Wagle	N/A	\$0	\$0	\$0
Stephanie Yarcheski	N/A	\$0	\$0	\$0

Paid Preparers

FISCAL YEAR 2019

Firm Name	Firm EIN	Firm Address	Firm Phone
JONATHAN STAPLEY			

BOARD LEADERSHIP PRACTICES

GuideStar worked with BoardSource, the national leader in nonprofit board leadership and governance, to create this section, which enables organizations and donors to transparently share information about essential board leadership practices.

BOARD ORIENTATION & EDUCATION

Does the board conduct a formal orientation for new board members and require all board members to sign a written agreement regarding their roles, responsibilities, and expectations?

Yes

CEO OVERSIGHT

Has the board conducted a formal, written assessment of the chief executive within the past year?

Not Applicable

ETHICS & TRANSPARENCY

Have the board and senior staff reviewed the conflict-of-interest policy and completed and signed disclosure statements in the past year?

Yes

BOARD COMPOSITION

Does the board ensure an inclusive board member recruitment process that results in diversity of thought and leadership?

Yes

BOARD PERFORMANCE

Has the board conducted a formal, written self-assessment of its performance within the past three years?

Not Applicable

Organizational Demographics

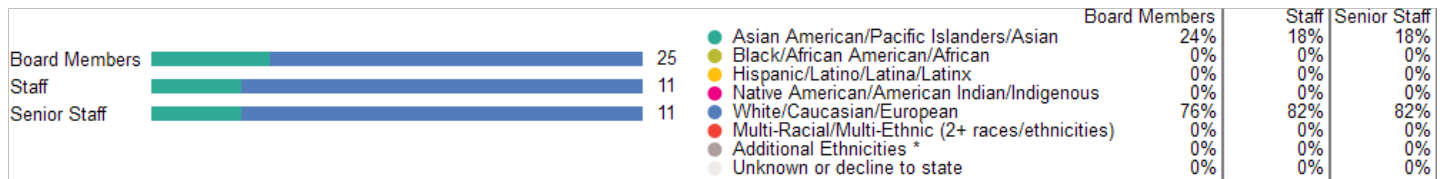
Who works and leads organizations that serve our diverse communities? This organization has voluntarily shared information to answer this important question and to support sector-wide learning. GuideStar partnered on this section with CHANGE Philanthropy and Equity in the Center.

Leadership

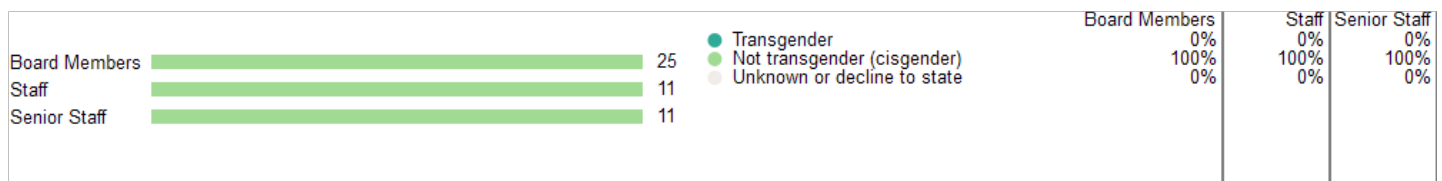
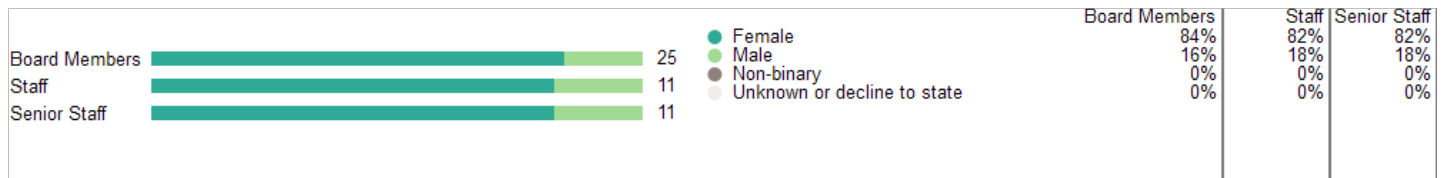
The organization's leader identifies as:

No data

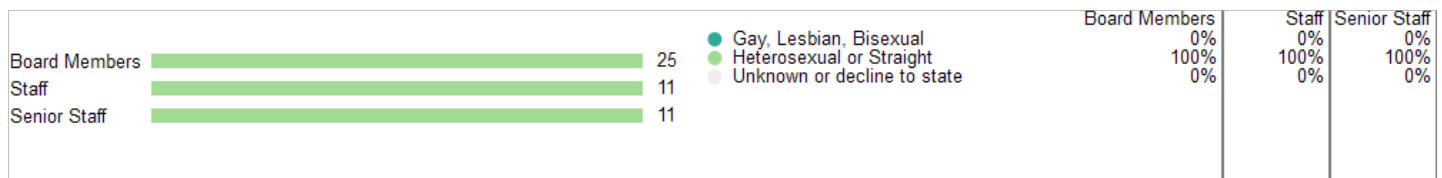
Race & Ethnicity



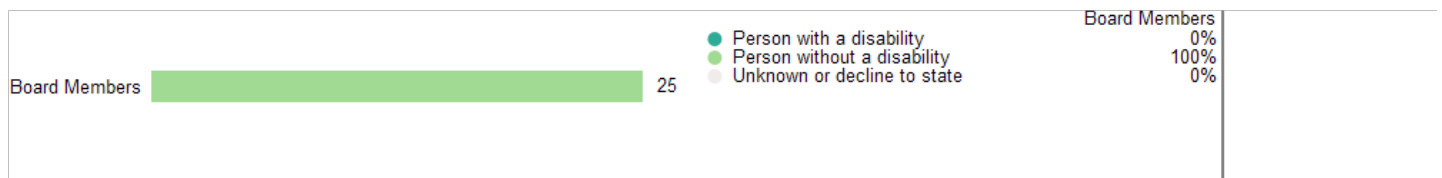
Gender Identity



Sexual Orientation



Disability



We do not display staff or senior staff disability information for organizations with fewer than 15 staff.

Equity Strategies *Last Updated: 09/09/2021*

Candid partnered with Equity in the Center - a project that works to shift mindsets, practices, and systems within the social sector to increase racial equity - to create this section. [Learn More](#)

Policies and processes

- ✓ We seek individuals from various race backgrounds for board and executive director/CEO positions within our organization.
- ✓ We have community representation at the board level, either on the board itself or through a community advisory board.
- ✓ We help senior leadership understand how to be inclusive leaders with learning approaches that emphasize reflection, iteration, and adaptability.
- ✓ We engage everyone, from the board to staff levels of the organization, in race equity work and ensure that individuals understand their roles in creating culture such that one's race identity has no influence on how they fare within the organization.

Appendix

Key Documents

IRS Forms 990

[2019 990](#)

[2018 990](#)

[2018 990](#)

[2017 990](#)

[2017 990](#)

IRS Forms 990T

Not Available

Audited Financial Statements

[2021 Audited Financial Statement](#)

Key Organization Documents

[Letter of Determination](#)

[2020 Annual Report](#)

['Key Revenue & Expense Data from Form 990'](#)

['Key Balance Sheet Data from Form 990'](#)

Chatham Education Foundation

PO Box 81
Chatham, NJ 07928

✓

Foundation Status Code: PC*

✓

Public charity described in section 509(a)(1) or (2)

IRS Publication 78 Details

IRS Pub 78 verified

Organization name	Location	Most recent IRS Publication 78
Chatham Education Foundation	Chatham, NJ	August 2022
EIN	<u>Deductibility status description</u>	Verified with most recent Internal Revenue Bulletin
22-3285022	A public charity (50% deductibility limitation).	August 29, 2022

IRS Business Master File Details

IRS BMF509(a)(1)

Organization name	Most recent IRS BMF	Reason for Non-Private Foundation Status
CHATHAM EDUCATION FOUNDATION	August 08 2022	Section 509(a)(1) organization as referred to in Section 170(b)(1)(A)(vi)
EIN	IRS subsection	Ruling date
22-3285022	This organization is a <u>501(c)(3) Public Charity</u>	10/1997
This organization was not included in the Office of Foreign Assets Control Specially Designated Nationals (SDN) list.		

On September 8, 2011, the IRS issued [regulations](#) which eliminated the advance ruling process for a section 501(c)(3) organization. [Learn more](#)

* The Foundation Status Code is the code that foundations are required to provide for each grantee annually on part XV of Form 990PF. Note that this code cannot be derived in some cases (e.g., supporting organizations for which 'type' can't be determined).

[IRS Revenue Procedure 2011-33](#) allows grantors to rely on third-party resources, such as GuideStar Charity Check, to obtain required Business Master File (BMF) data concerning a potential grantee's public charity classification under section 509 (a) (1), (2) or (3).

GuideStar Charity Check Data Sources

- GuideStar acquires all IRS data directly from the Internal Revenue Service.

-[IRS Publication 78 \(Cumulative List of Organizations\)](#) lists organizations that have been recognized by the Internal Revenue Service as eligible to receive tax-deductible contributions.

-The [IRS Internal Revenue Bulletin](#) (IRB) lists changes in charitable status since the last Publication 78 release. Between the release of IRS Publication 78 and the subsequent IRS Internal Revenue Bulletin, the IRB date will reflect the most recent release date of IRS Publication 78.

-The [IRS Business Master File](#) lists approximately 1.7 million nonprofits registered with the IRS as tax-exempt organizations.
- The [IRS Automatic Revocation of Exemption List](#) contains organizations that have had their federal tax-exempt status automatically revoked for failing to file an annual return or notice with the IRS for three consecutive years.

-The Foundation Status Code is a value derived by mapping the codes found on the [990PF filing instructions](#) to the corresponding codes in the IRS BMF. Note that not all codes are able to be mapped due to insufficient data.

-The Office of Foreign Assets Control (OFAC) [Specially Designated Nationals \(SDN\) list](#) organizations that are owned or controlled by targeted individuals, groups, and entities, such as terrorists or narcotics traffickers. Their assets are blocked and U.S. persons are generally prohibited from dealing with them.